



Technical Information

► Brewing Unit - Top piston fitting

TI-145

Information type:	✗ Service	✗ Update	✓ General	✗ Other
Machines:	✓ Cameo	✓ Enigma	✓ E'line	✗ Other
Module:	✓ Brewing	✗ Hydraulic	✗ Grinder	✗ Steam ✗ Milk ✗ Other
Compatibility:	✗ Full	✗ Partially	✗ Incompatible	✓ Other

Description

On Eversys machines, there are three top piston fitting versions (V1, V2 and V3). Refer to the flowchart for available upgrade kits and compatibility between versions.

The use of silicon braided tubes on fitting V2 and V3 requires the use of the **Art. Nr. 108471/SAP 5300108471**.



Fitting V1

The fitting V1 has been assembled on Cameo brewing unit V1/V2 and on E'line brewing unit V1. It was possible to connect silicon braided tubes only and the crema nozzle was not available.

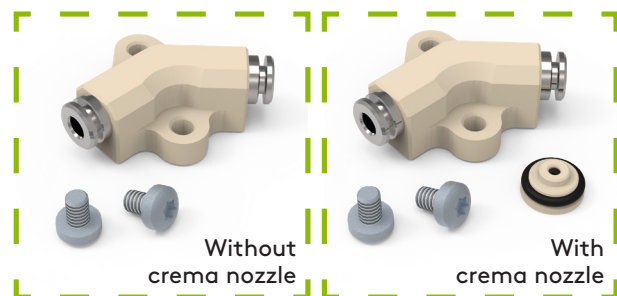
The fitting was available in black colour only.



Fitting V2

The fitting V2 has been assembled on Cameo brewing unit V3 and on Enigma brewing unit V2. It was possible to connect FEP tubes and the crema nozzle was available as an option.

The fitting was available in cream colour only.

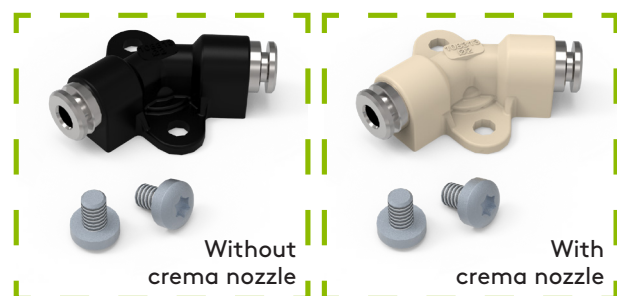


Fitting V3 (New version)

The fitting V3 is assembled on Cameo brewing unit V3 and on Enigma/E'line brewing unit V2. It is possible to connect FEP tubes and the crema nozzle is available as an option.

The fitting is available in two colours:

- Black colour: Without crema nozzle
- Cream colour: With crema nozzle



Refer to the TI-120 ([Cameo](#) and [Enigma/E'line](#)) for more information about brewing units.



Compatibilities

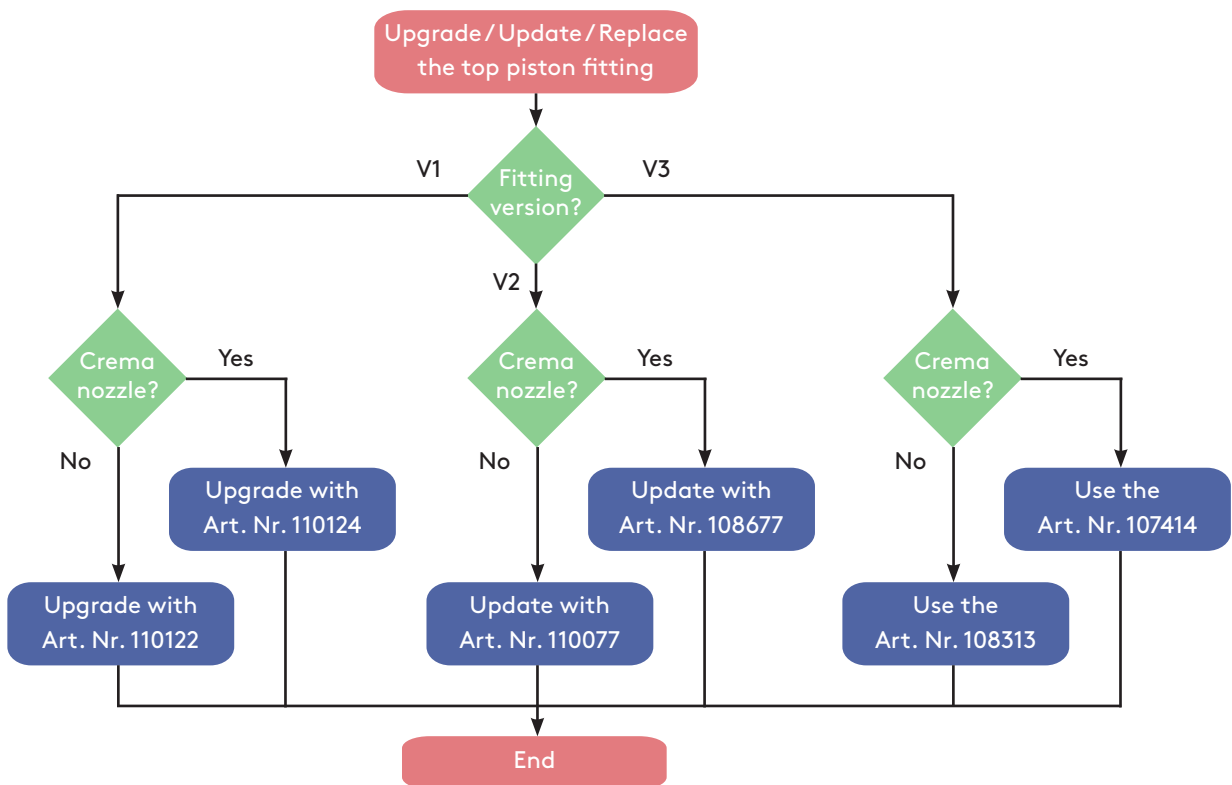


Important!

When upgrading/ updating your fitting, always make sure to use the screws provided inside the kit. There is a risk of damage to the piston if the screws are too long.

It is possible to upgrade or update the top piston fitting from V1 or V2 to V3.

It is necessary to know the version assembled on your brewing unit and the use of a crema nozzle. If necessary, upgrade or update using kits or single article.



The number of kits or articles to order depends on the module type:

- Single module (C'2x/ E'2x): 1 x kit or article
- Double module (E'4x/Shotmaster): 2 x kits or articles