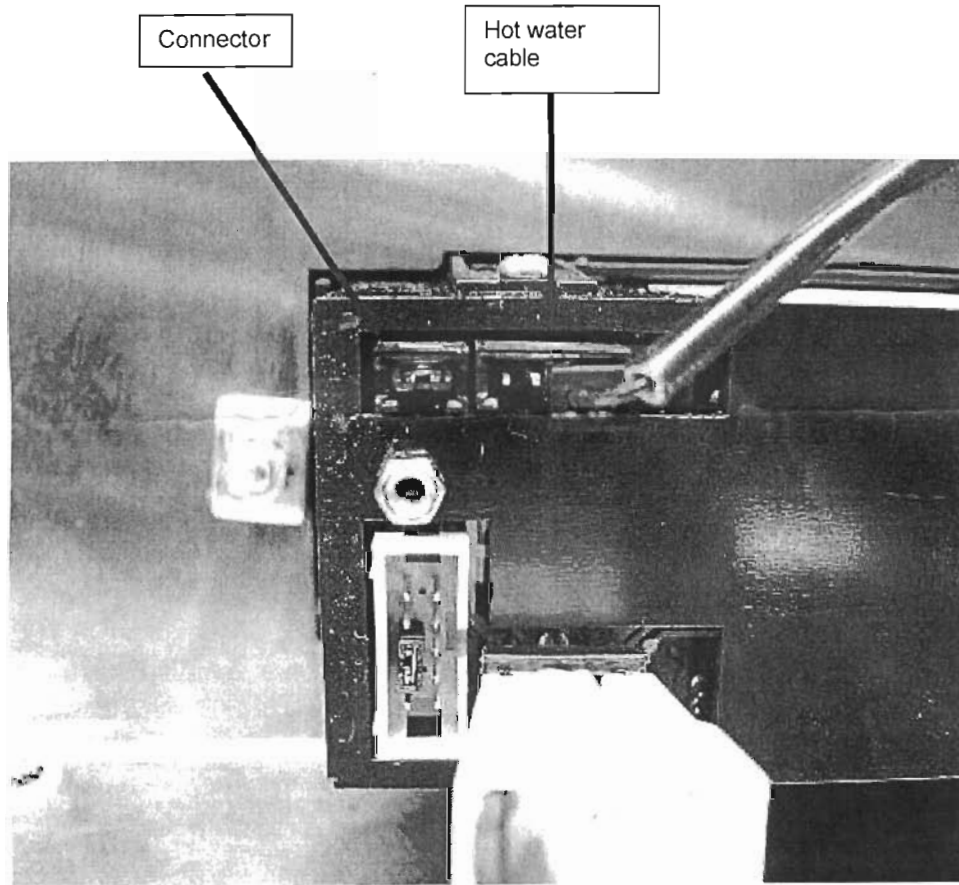


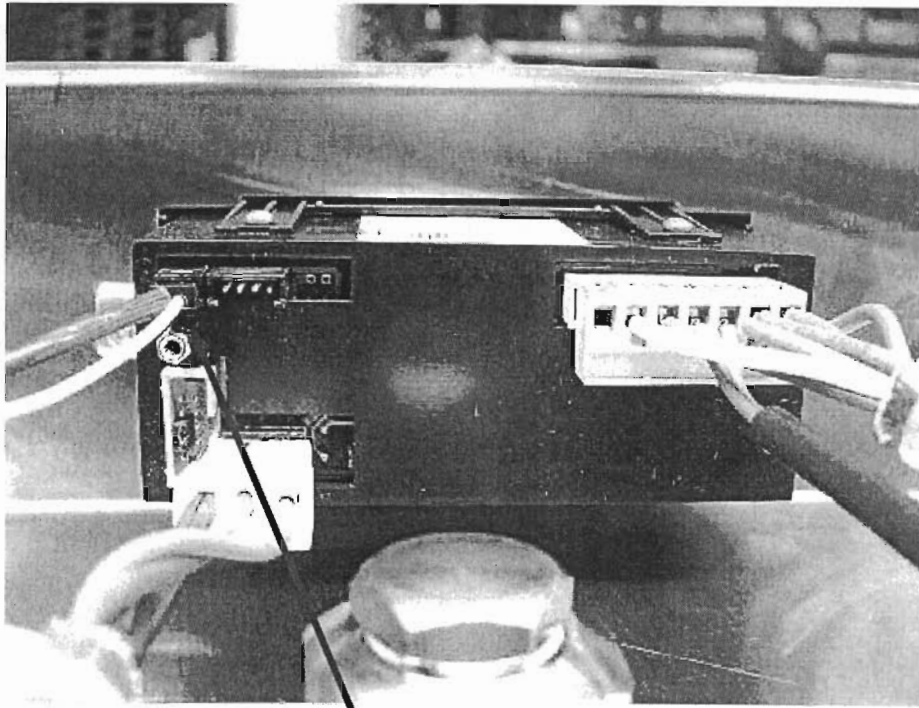
How to program the Iberital-Marlinc pcb.

1. You should connect the touch paths as in the pictures.

Hot water touch path (left)



Level probe touch path (right)



Earth & level probe connections

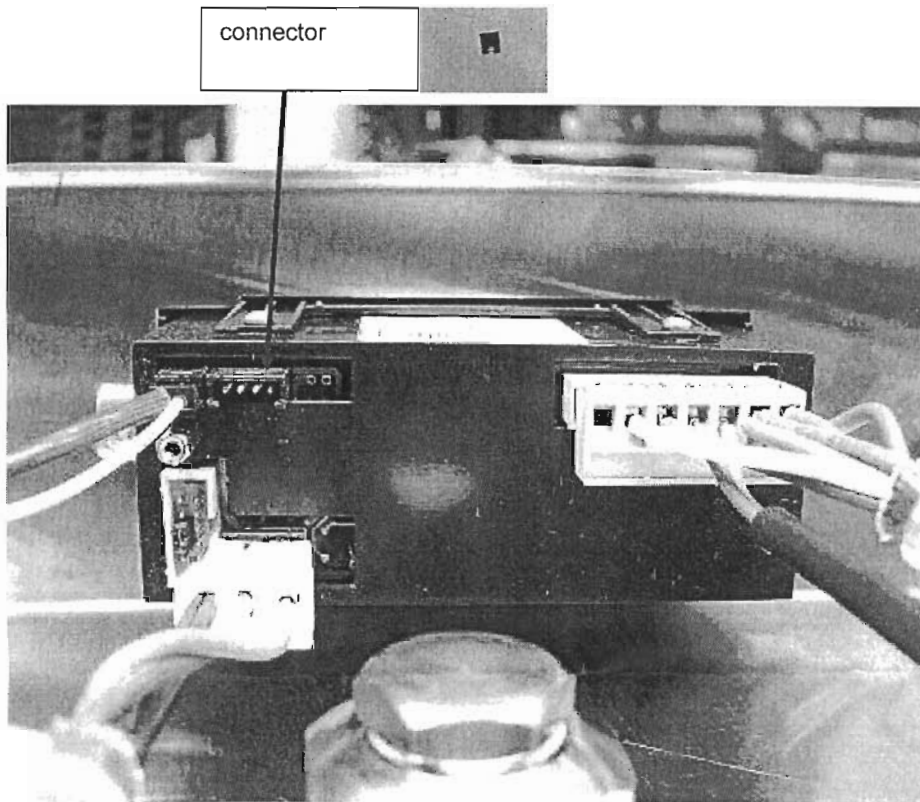
2. How to program the hot water pcb

- To program the hot water pcb you should keep pressed (together) the hot water key and the short coffee key.
- Next, turn the machine on in position 1 or 2.
- The short coffee and the large coffee leds will turn on.
- Stop pressing and turn the machine off.

When you turn the machine on the again, the pcb will be programmed as a hot water pcb.

3. How to program the level probe pcb

- Connect a connector at the back of the pcb, in the same way you would connect the hot water key.



- To program the pcb as a level probe pcb, you should keep pressed the large coffee key.
- Next, turn the machine on in position 1 or 2.
- The large coffee and the 2 large coffee leds will turn on.
- Stop pressing and turn the machine off.

When you turn the machine on again, the pcb will be programmed as a level probe pcb.

- Finally, you should remove the connector you connect in the first step.